



Beaufort County
Public Works
Stormwater Infrastructure
Project Summary

Project Summary: Bailey Circle

Activity: Routine/Preventive Maintenance

Narrative Description of Project:

Duration: 5/31/2016

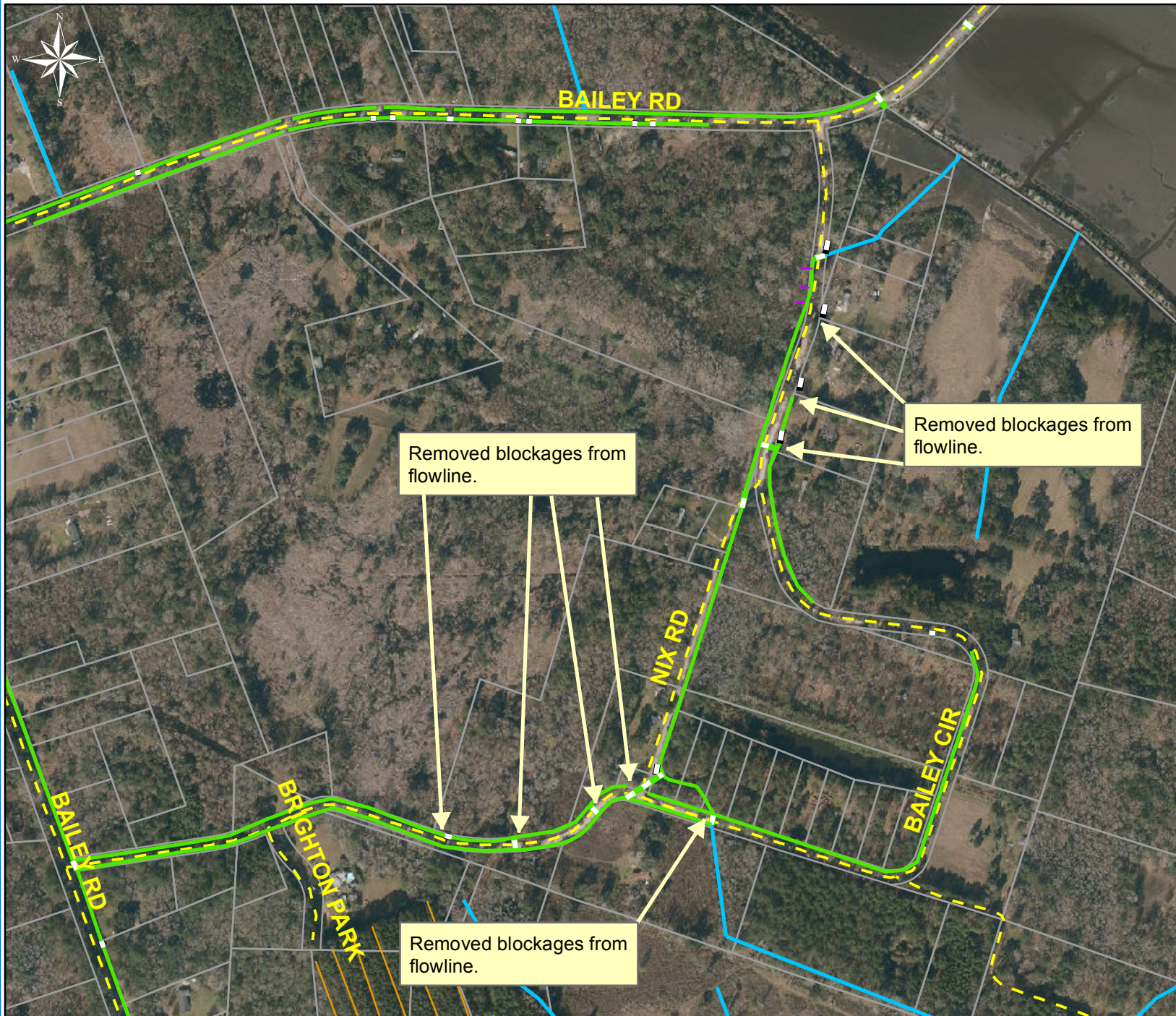
Removed blockages from flowline.

2016-621 / Bailey Circle

	Labor Hours	Labor Cost	Equipment Cost	Material Cost	Contractor Cost	Indirect Labor	Total Cost
AUDIT / Audit Project	0.5	\$11.75	\$0.00	\$0.00	\$0.00	\$6.62	\$18.36
HAUL / Hauling	10.0	\$247.00	\$79.90	\$18.15	\$0.00	\$144.20	\$489.25
RB / Remove blockage from flowline	20.0	\$473.90	\$35.40	\$14.48	\$0.00	\$317.40	\$841.18
2016-621 / Bailey Circle Sub Total	30.5	\$732.65	\$115.30	\$32.63	\$0.00	\$468.22	\$1,348.79

Grand Total	30.5	\$732.65	\$115.30	\$32.63	\$0.00	\$468.22	\$1,348.79
--------------------	-------------	-----------------	-----------------	----------------	---------------	-----------------	-------------------

(Pictures Not Available)



Project: Bailey Circle

Activity: Routine/
Preventive
Maintenance

Project #:
2016-621

Township/SW Dist:
Sheldon/5

Completed:
May 2016

Legend

Drainage Type

- Access Pipe
- Bleeder Pipe
- Channel Pipe
- Channel
- Stream
- Crossline Pipe
- Driveway Pipe
- Lateral
- Lateral Pipe
- River
- Road Pipe
- Roadside
- Roadside Pipe

0 120240 480 720 960
Feet

1 inch = 500 feet

Prepared By: BC Stormwater Management Utility
Date Print: 08/31/2016
File: C:\project summaries map\Bailey Circle_2016-621